

## Quick Start

This *Quick Start* describes how to install and start the following versions of Webroot® Spy Sweeper®:

- **Spy Sweeper:** Standard version that protects your computer from spyware and other potentially unwanted programs. Includes a one-year subscription to Webroot threat definitions.
- **Spy Sweeper with AntiVirus:** Same protection as the standard version of Spy Sweeper, plus antivirus protection. Includes a one-year subscription to Webroot threat definitions.
- **Spy Sweeper Trial Version:** Complimentary version that protects your computer on a trial basis.
- **Spy Sweeper Scan-Only Trial Version:** Complimentary version that scans for spyware and other potential threats, but does not remove detected items.

## Reviewing system requirements

Before you install and run Spy Sweeper, make sure your computer meets the following requirements:

- Operating systems: Windows® 2000, Windows XP (Professional, Home, Media Center, or Tablet) or Windows Vista™ (Home Basic, Home Premium, Business, or Ultimate).
- Processor: 300 MHz
- Hard drive space: 100 megabytes
- RAM: 256 megabytes
- Internet Explorer 5.5 (or higher) or FireFox 2.0 (or higher), for tasks that require linking to the Webroot Web site, such as checking for product updates.

## Upgrading Spy Sweeper

If you are upgrading from a previous version of Spy Sweeper, install the new program by following the instructions in the next section, “[Installing Spy Sweeper](#).” Do *not* uninstall your existing version of Spy Sweeper. Installing the new version over the existing one retains the quarantine information from previous sweeps and automatically retains your Spy Sweeper settings.

---

### **Spy Sweeper with AntiVirus**

If you are installing Spy Sweeper with AntiVirus and you have another antivirus program installed, uninstall the old antivirus program before you install Spy Sweeper with AntiVirus. If your antivirus software performs functions in addition to virus protection, you should be able to just turn off the antivirus function and keep the software installed. Do not run two antivirus applications simultaneously.

---

# Installing Spy Sweeper

Depending on how you purchased Spy Sweeper, you may need to install it from a CD or from a file downloaded from the Webroot Web site. If you bought a standard version with a subscription, you must have a valid key code to install Spy Sweeper. (Your key code comes in an e-mail message or is listed on the CD sleeve.) If you are installing a trial version, you do not need to enter a key code.

## To install Spy Sweeper:

1. Close any programs that may be open on your computer, then start the installation routine either from a CD or from a downloaded file:
  - If you are installing from a CD, insert the CD into the CD drive. The installation options should open automatically. If they do not, use Windows Explorer to navigate to your CD drive, double-click **install.exe**, then click **Install Spy Sweeper** to start the installation. From the Welcome screen, click **Next**.
  - If you are installing from a downloaded file, navigate to where you downloaded the file in Windows Explorer and double-click the file to start the installation. From the Welcome screen, click **Next**.

---

### **Spy Sweeper with AntiVirus**

If you are installing Spy Sweeper with AntiVirus and there is another antivirus program already installed, the Potentially Conflicting Software Detected window opens after the Welcome screen. This window tells you to uninstall your current antivirus program before installing Spy Sweeper with AntiVirus. If you do not uninstall your existing antivirus program, it may conflict with Spy Sweeper with AntiVirus and cause your computer to become unstable. *We strongly recommend that you remove any existing antivirus programs.* If the conflicting software performs other functions in addition to the antivirus function, you should be able to turn off the antivirus function and keep the software installed.

After uninstalling the old antivirus software, return to Potentially Conflicting Software Detected window and click **Next**.

---

2. Enter the key code in one of the following Keycode windows (a different window appears, depending on whether you have a previous version of Spy Sweeper installed on your computer). Then click **Next**.
  - Your key code comes in an e-mail message or is listed on the CD sleeve. If it came in an e-mail message, you can copy the entire key code from the message and paste it into the first field in the window. The key code will automatically fill in all the fields.
  - You can enter the letters in lower or upper case; the key code is not case sensitive. The key code contains only letters, no numbers.
  - If you do not enter a valid key code, the **Next** button stays unavailable (dimmed). If the button does not become available, check the accuracy of the code you entered.
  - The key code is associated *only* with Spy Sweeper and does *not* include any information related to your computer or its configuration. Webroot does not use the key code in any way to track individual use of its products.

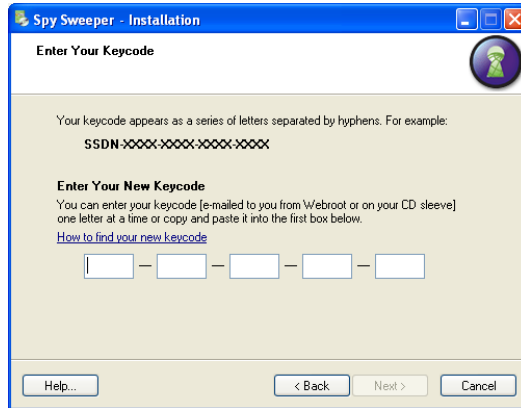
---

### **Trial Versions**

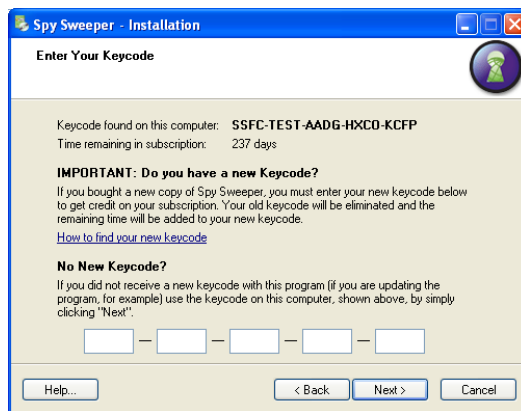
If you are installing a Trial version, you do not enter a key code. However, a screen opens that prompts you to select either Spy Sweeper or Spy Sweeper with AntiVirus.

---

*No previous version installed:*



*Existing version installed:*



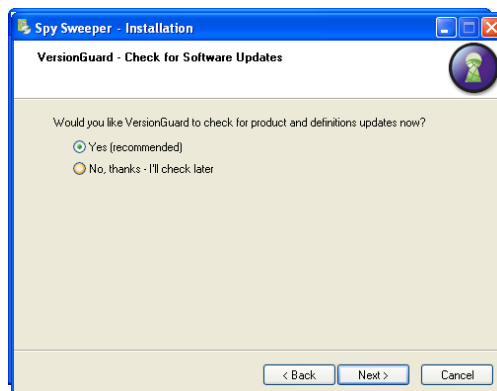
3. The Version Guard window opens, asking if you want to check for product updates. If you have access to the Internet now and want to be sure that you install the most current program version and threat definitions, select Yes. (Threat definitions identify spyware, viruses, and other potentially unwanted programs.) Then click **Next**. If you want to check for updates later, select No and click **Next** to continue the installation.

---

### **Spy Sweeper with AntiVirus**

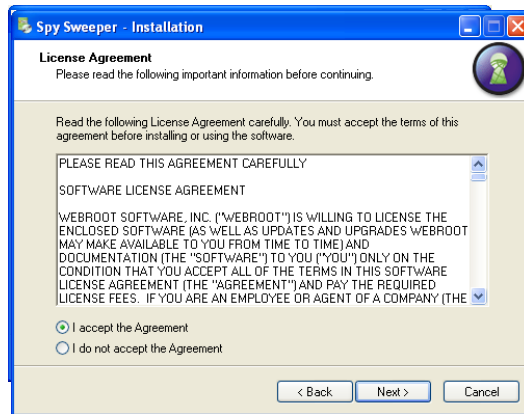
If you are installing Spy Sweeper with AntiVirus, you must check for updates to receive the virus definitions. Otherwise, you will not have virus protection.

---



If you select Yes and new definitions are available, Spy Sweeper downloads them and displays the progress of the download. If a newer version of Spy Sweeper is available, it downloads and automatically starts the installation process, continuing from where you left off.

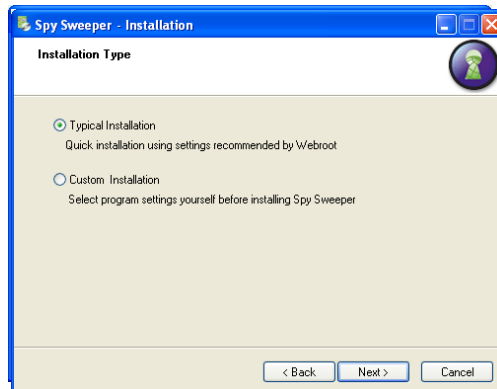
4. In the License Agreement window, select the “I Accept the Agreement” option if you agree with the content, and click **Next**.



5. In the Installation Type window, select the type (we recommend “typical”) and click **Next**.

A typical installation uses pre-determined configuration settings recommended by Webroot. A custom installation allows you to change these settings:

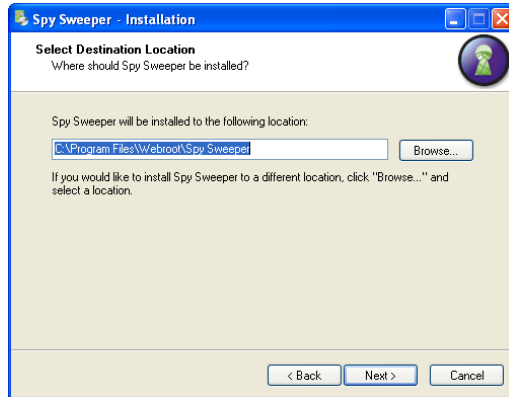
- Location for the Spy Sweeper program files. (The typical installation location is C:\Program Files\Webroot\Spy Sweeper.)
- Option for Spy Sweeper to start along with Windows start-up. (This option can also be changed in the Spy Sweeper program after installation.)
- Option for adding a Spy Sweeper shortcut to your desktop.
- Option that lets you run a sweep on a specific file or folder from Explorer. (This option can also be changed in the Spy Sweeper program after installation.)



6. If you chose a Custom Installation, enter information in the following two windows. If you selected a Typical Installation, skip this step.

In the first window, you can enter a different location for the installation. (For most users, we recommend letting Spy Sweeper install to the default location.) Then click **Next**.

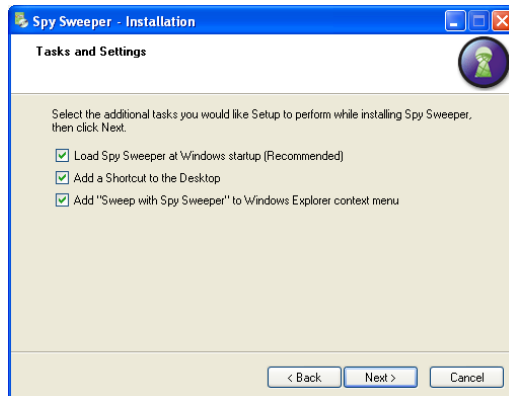
*Custom installations only:*



In the next window, select or deselect options and click **Next**:

- **Load Spy Sweeper at Windows Startup.** Spy Sweeper starts whenever you start Windows, so it is always protecting your computer. We recommend using this option.
- **Add a Shortcut on the Desktop.** Adds a Spy Sweeper shortcut to your desktop. You can then double-click the shortcut icon to start Spy Sweeper.
- **Add "Sweep" Option to Windows Explorer Context Menu.** Lets you run a sweep on a specific file or folder from Windows Explorer.

*Custom installations only:*



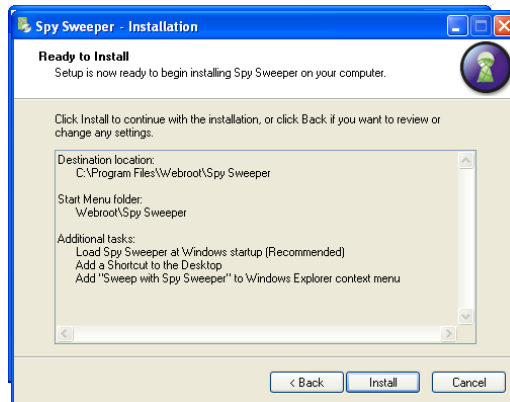
---

## **T** Trial Versions

If you are installing the Spy Sweeper Scan version, the Permission to Send Sweep Results window opens. If you want to send your sweep results anonymously to Webroot, click **Next**. This option stores the number of traces found, date and time of the sweep, and threats detected from your first sweep only. Spy Sweeper will send this sweep information to Webroot when you are connected to the Internet and take an action in Spy Sweeper that requires it to communicate with the Webroot server. This helps Webroot better understand which threats are most common and helps us monitor trends.

---

7. In the Ready to Install window, click **Install** to begin the installation.



After you click **Install**, a screen shows the progress of the installation.

8. The Installation Complete window prompts you to restart the computer. Select whether you want to restart now or later, then click **Finish**.

You should restart your computer to fully activate Spy Sweeper protection. If you do not, the Spy Sweeper shields cannot protect against potential threats that try to install themselves.

---

## **T** Trial Versions

When you're ready for a standard version of Spy Sweeper with a subscription, connect to the Internet and display the Spy Sweeper Main screen (see the next section, "[Starting and running Spy Sweeper](#)"). For Scan-Only versions, a **Subscribe** button displays in the top, red banner. For Full Trial versions, a **Buy Now** button appears. Click one of those buttons to connect to the Webroot Web site.

---

## Starting and running Spy Sweeper

Spy Sweeper runs automatically when Windows starts (providing you did not turn off the **Load Spy Sweeper at Windows Startup** option during a custom installation). Look for the Spy Sweeper icon in the Windows system tray in the lower-right corner of your screen. This icon indicates that Spy Sweeper is running and actively protecting your computer.

Spy Sweeper icon



To open the Main window (and manually start Spy Sweeper, if necessary), do one of the following:

- Double-click the Spy Sweeper icon in the system tray or right-click the icon and select **Home** from the pop-up menu.
- Double-click the Spy Sweeper icon on your Windows desktop or click the Windows **Start** menu and select **All Programs > Webroot > Spy Sweeper > Spy Sweeper**.

When the Main window opens (as shown below), you can click one of the Help buttons to display the on-line instructions.



